

 **SINTESE**

**THE NEW ERA
OF DIGITAL LOADS**



AKUIS

REVOLUTIONIZING PHYSICAL ACTIVITY AND TRAINING





SINTESI is a groundbreaking machine that uses electric motors to simulate the most popular gym equipment, making it an innovative tool for both sports and rehabilitation. The machine offers a complete training session that is customized using a unique device, providing harmonic, consistent, and comparable data in real time.

AKUIS

**ADVANCED KINETIC USER
INTERACTION SYSTEMS**

MISSION: We want to improve clients performance and well-being by providing cutting-edge fitness training technology. Sintesi, our flagship product, offers a personalized training experience, enabling clients to reach their fitness goals swiftly and effectively, while prioritizing other crucial aspects of their lives. We strive for constant technological innovation and unparalleled customer service, positively impacting the health and fitness industry.

VISION: Akuis aims to revolutionize the fitness industry by offering innovative, customized solutions that provide reliable and consistent data. Our minimalistic approach to product design empowers individuals to train and monitor their physical fitness effectively without sacrificing valuable time for work, socializing, and family.

ADDRESSING THE NEEDS OF MODERN FITNESS TRAINING WITH SINTESI

SINTESI RESPONDS TO SEVERAL NEEDS IN THE FITNESS AND REHABILITATION INDUSTRY:

- **Personalized training:** Sintesi delivers a customized training experience, allowing individuals to tailor their workout routines to their specific fitness goals and needs.
- **Efficient use of time:** Sintesi provides a time-efficient training solution, enabling individuals to achieve their fitness objectives without sacrificing time for work, socializing, and family.
- **Reliable and consistent data:** Sintesi produces accurate and consistent data on training progress, which is essential for monitoring performance and ensuring effective training.
- **Versatile training:** Sintesi's technology allows for versatile training, simulating the behavior of various gym equipment, and adapting to different types of practices and training requirements.

INNOVATIVE MULTIFUNCTIONAL SMART STATION

ELECTRIC
MOTORS



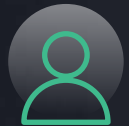
MONITORING AND
PERFORMANCE CONTROL



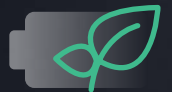
DIMENSION AND
WEIGHT REDUCED



ADVANCED
LOAD PROFILES



VERY LOW
CONSUMPTION



ENGAGING AND
HARMONIC WORKOUT

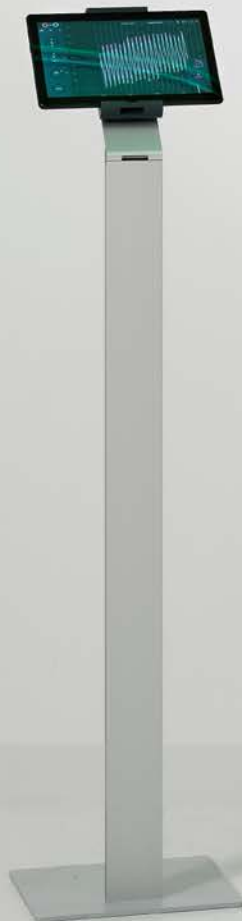


TIME
OPTIMIZATION



VERY
FAST ROI






SINTESI
powered by

 **TESI**
AKUIS



**A WHOLE
FITNESS LAB
IN ONE DIGITAL
MACHINE.**

**FULL BODY
WORKOUT
WITH VISUAL
DATA
FEEDBACK.**

SINTESI is an innovative device that provides a new way of doing physical activity both in sport and in rehabilitation.

Its technology is based on the use of electric motors to generate a load that simulates the one of the most varied equipments used in gyms.

All working parameters are set by a simple tablet that is always connected to the machine and shows in real time relevant and objective data on training, with the ability to store and compare them, to allow the trainer to develop “workouts” always at their best.

The mechanism technically defined *Dynamic Vectoring System* allows a complete freedom of movement, reproducing the behaviour of free weights, isotonic machines and much more, electronically adapting the device to any type of practice and for each training requirement.

This makes **SINTESI** as well as a gym, also a valuable assistant able to recommend, track and stimulate the user, customizing the training experience.



AKU

UIS



IN VERTICAL SPACE SAVER WORKBASE

The two tubular modules can be **applied directly to a wall**, thanks to the **simple brackets** provided with rapid attachment/detachment.

You can pre-install additional brackets in other environments and use the same modules without limitations.

This configuration allows to easily optimize the space.

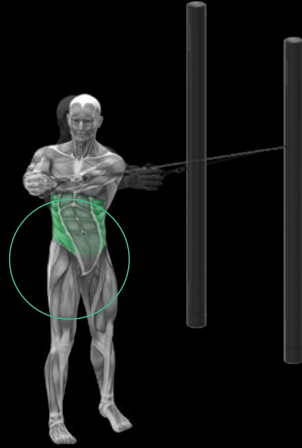


A single module weights less than 9 kg and can generate a load up to 50 kg (for a total of 100 kg).

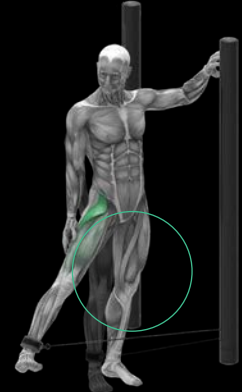


SOME VERTICAL WORKOUT EXAMPLES

STANDING
OBLIQUE TWIST



STANDING
LEG ABDUCTION



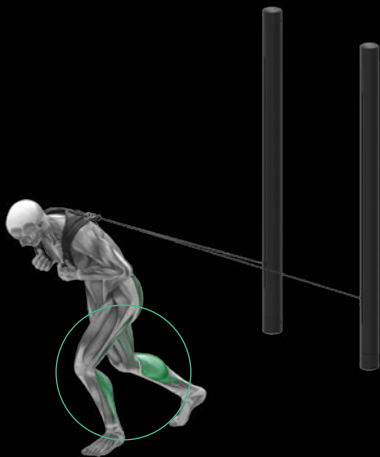
STANDING
PULLDOWN TRICEPS



SEATED NEUTRAL
GRIP PULLEY ROW



FULL-BODY
THRUSTS



LAT
MACHINE



IN HORIZONTAL

A SOLID WORKBASE

Thanks to the platform accessory, it is possible to position the **tubular modules horizontally** with the same **rapid** fastening/unfastening system.

In this configuration it is possible to perform multiple exercises in a reduced space (205 X 95 cm), both inside and outside of the platform that has been specifically designed to ensure a solid stability on the ground and sized for a convenient use of any bench or step. It also allows a total accessibility even in cases of users with disabilities.

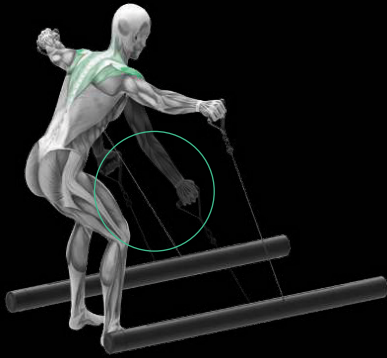


Sintesi is modular and can also be placed horizontally, thanks to the movable Footboard. The switching requires very few seconds.



SOME HORIZONTAL WORKOUT EXAMPLES

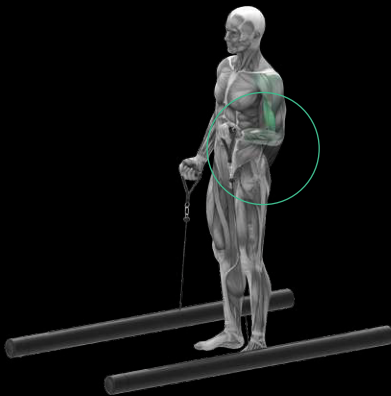
LATERAL
RAISES



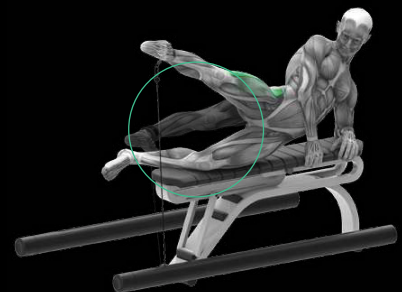
CHEST
FLY



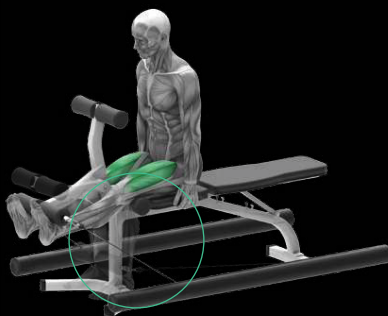
BICEPS
CURL



LATERAL
LEG ABDUCTION



LEG EXTENSION



JUMP



WHAT CAN YOU DO WITH SINTESI? A FITNESS LAB ALL-IN-ONE



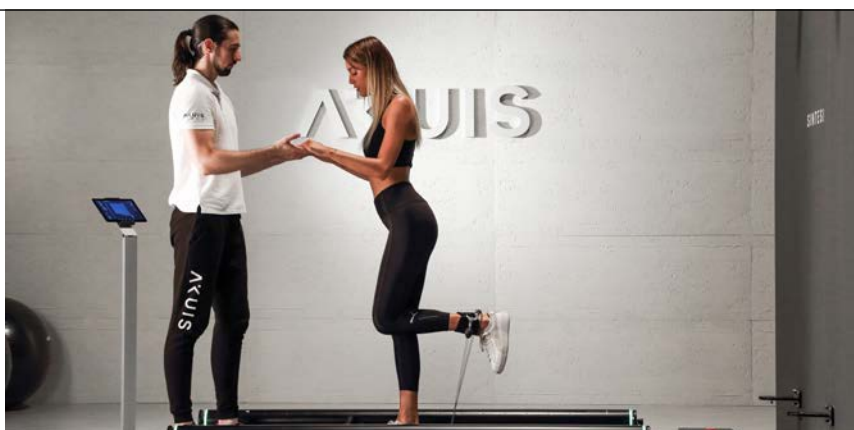
**STRENGTH
HYPERTROPHY**



CARDIO



**PROPRIOCEPTION
STABILITY**



POWER





**TONING
SLIMMING**



**FUNCTIONAL
RECOVER**



**FUNCTIONAL
TRAINING**



**SPORT PERFORMANCE
RETURN TO PLAY**

ENDLESS POSSIBILITIES OF TRAINING



THE DIGITAL LOAD

A NEW KIND OF WORKOUT

Unlike traditional weights (dumbbells or isotonic machines), the electric motors technology allows to obtain a smooth and constant resistance which is not affected by torque and gravity.

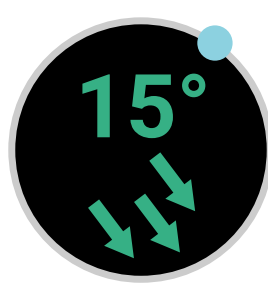
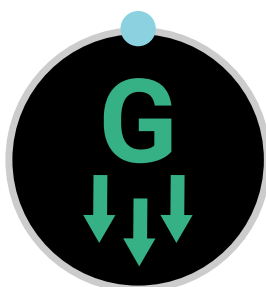
This greatly enhances the recruitment of muscle groups, during the movement, improving the result in less time.

DYNAMIC VECTORING

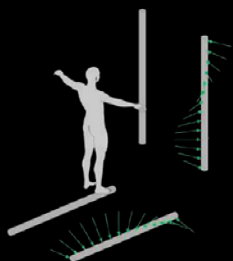
FREEDOM OF MOVEMENT

Thanks to this patented technology, the load of exercise is always perpendicular to the ground or in other directions for any training requirements.

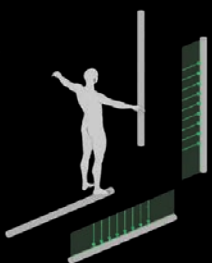
It is possible to set a variable angle from 0° to 45° , maintaining then always constant the vector component, or set a fixed point of the cable exit. This allows you to fit the natural biomechanics of human body.



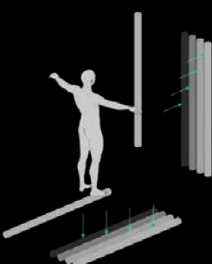
A NEW FORM OF THOUGHT



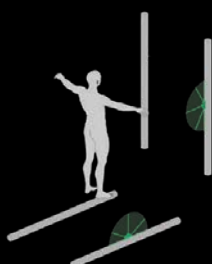
FREE ROTATION AROUND
THE LONGITUDINAL AXIS



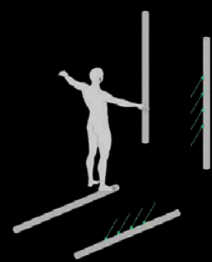
CONSTANT GRAVITY
AND PERPENDICULARITY
SIMULATION



TRANSVERSAL
ALIGNMENT



FIXED POINT FUNCTION



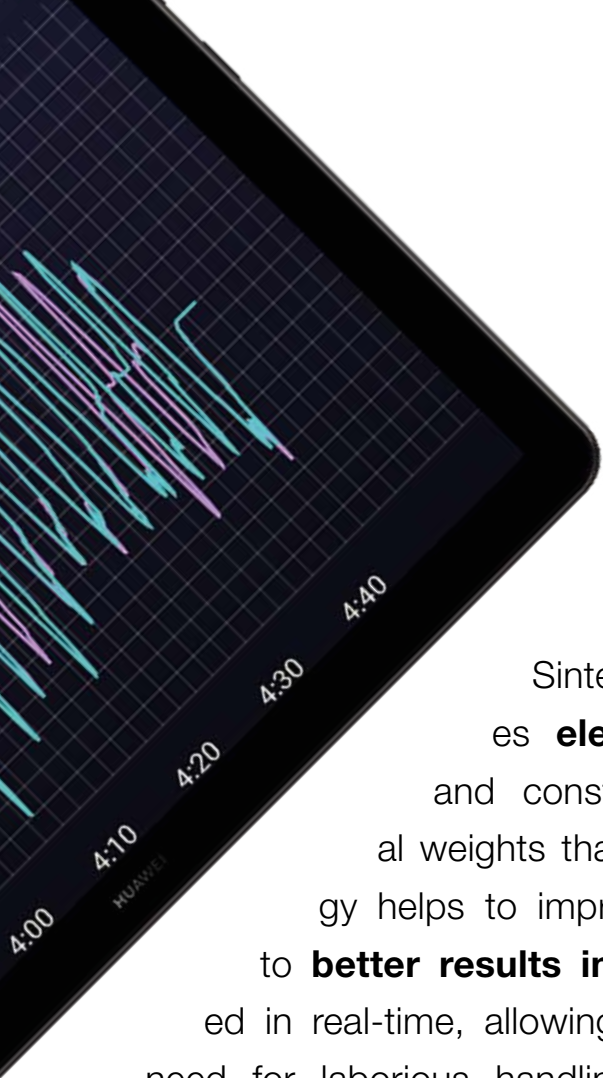
CONSTANT ANGLE
FUNCTION

SINTESI is the ultimate solution to the numerous deficiencies, currently present on the market, of equipments of physical activity.

The product has been studied and designed in order to help the user in a highly motivational path that allows a pure training through targets and which returns measurable results of quality, both in terms of performance and implementing rules of practice.

SINTESI is able to make natural, pleasant and harmonious the muscle training.





EXPLORING THE ADVANCED FEATURES OF SINTESI

Sintesi is an advanced exercise machine that utilizes **electric motors technology** to provide a smooth and constant resistance during workouts, unlike traditional weights that are affected by torque and gravity. This technology helps to improve muscle recruitment during movement, leading to **better results in less time**. Furthermore, the load can be adjusted in real-time, allowing for a more efficient workout, and eliminating the need for laborious handling operations associated with traditional weights, thus reducing the risk of accidents and improving professional operativeness.

The machine also incorporates Dynamic Vectoring **patented technology** that ensures that the load of exercise is always perpendicular to the ground or in other directions, depending on the training requirements. This means that the angle of the load can be set from 0° to 45°, while maintaining a constant vector component or setting a fixed point of the cable exit. This allows the machine to **fit the natural biomechanics of the human body**, resulting in a more effective and efficient workout.

Sintesi also includes a **user profiling feature** that allows trainers to create and manage a database of users and set personalized exercise programs. Users can have default programs, and data can be exported to the Cloud. However, access to these features requires an account provided by AKUIS.

The machine also features an **advanced reporting functionality** that allows users to synchronize their training data on a cloud platform using a dedicated app. Users can view and export reports of their workout data from any browser, whether on a desktop or mobile device. This feature helps users to track their progress and adjust their workouts to achieve their fitness goals more effectively.

LOAD PROFILES

SINTESI CAN SIMULATE MANY WORKING CONDITION



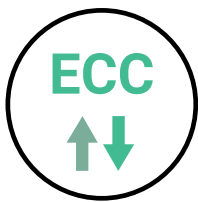
CONSTANT

The load is always constant and is not affected by the inertial influence of the load.



PRECISION

Load type from 1 to 10 kg with 100 g increment step by step. It allows gradual improvements with low loads and increased accuracy.



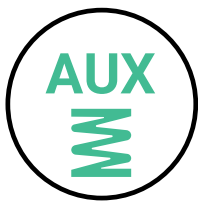
ECCENTRIC

It allows you to separate the load in the positive phase from the negative one. You can then increase or decrease the load in the eccentric phase.



MAGNETIC

The load simulates the same magnetic attraction between two magnets that, more are close to the zero point, more the magnetic attraction increases.



AUXOTONIC

It progressively increases the load depending on the extension of the cable, reproducing the same feeling of an elastic with different levels of resistance.



ISOMETRIC

It produces a muscle contraction, even at its top, without any shortening of the muscles and moving of the joint.



VISCOUS

The load varies according to the speed of execution, by setting the viscosity of a fluid. It simulates the same functionality of a rowing machine.



ISOKINETIC

The load shows a constant linear velocity motion, regardless of the applied force.



VIBRANT

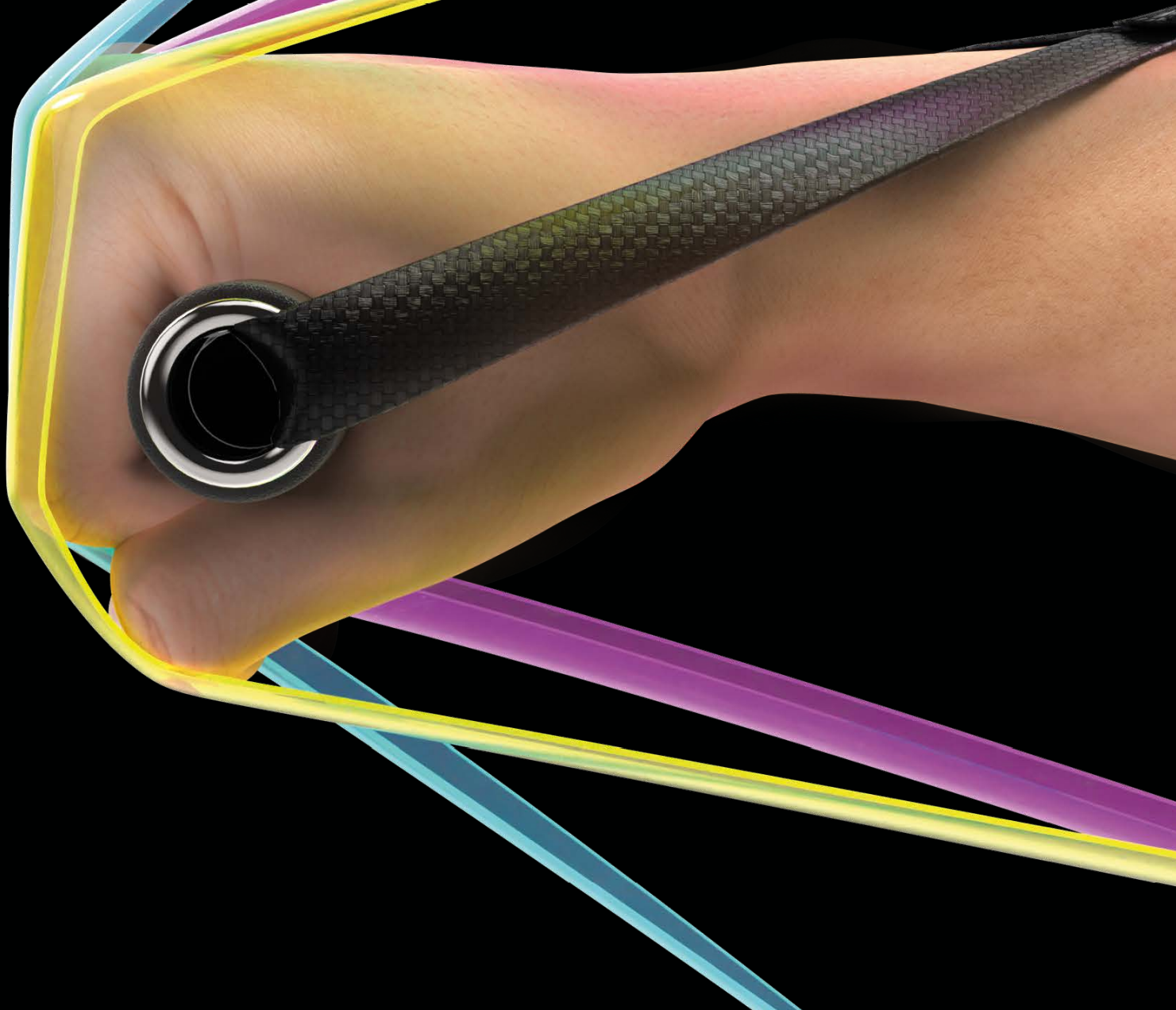
The load varies randomly with adjustable frequency to create instability/imbalance during the operation.



RANDOM

Like constant loading but with the addition of unpredictable random load variation: it improves neuromotor reactivity, proprioception and prevents injuries.

**TEN DIFFERENT PROFILES
PERSONALIZE YOUR TRAINING AS
NEVER BEFORE**



PLUS



POWER

The electric motor can generate a load up to 100 Kg (50 Kg per module).

EASY TO USE

Very intuitive and user friendly interface on the tablet.

SAFETY

Thanks to the safety systems, load can be deactivated at any moment.

SAVE TIME

Quick change between several exercises and different load levels.

LOW CONSUMPTION

It greatly reduces energy consumption by recovering the energy produced by the user.

VERSATILITY

It activates every muscle group using multiple accessories.

REDUCED SPACE

A footboard with small dimensions.

INDEPENDENT SETUP

Train two or more people with a single machine thanks to the separate setting of each module.

INVOLVEMENT AT 360°

Entertainment and motivation with a Smart Device.

ACCESSIBILITY

People in wheelchair can practice very easily.

FOR REHABILITATION

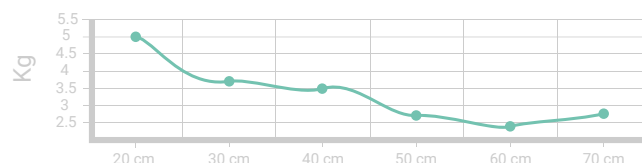
AN ADVANCED TOOL FOR ALL YOUR NEEDS

SINTESI, thanks to its technology, fits the needs of physiotherapists, physiatrists and rehabilitation professionals.

The load, being digital, can be set in steps of 100 grams, also allowing users with physical difficulties of being able to more easily recover the movement function.

The different, available load profiles allow to vary the intensity, dynamically, so as to facilitate, for example, the complete joint movement of an arm.

Example of how it is possible to adjust the load in relation to the excursion of the cable.



ACCESSIBLE TO EVERYBODY

PEOPLE WITH RESTRICTED MOBILITY CAN EASILY PRACTICE

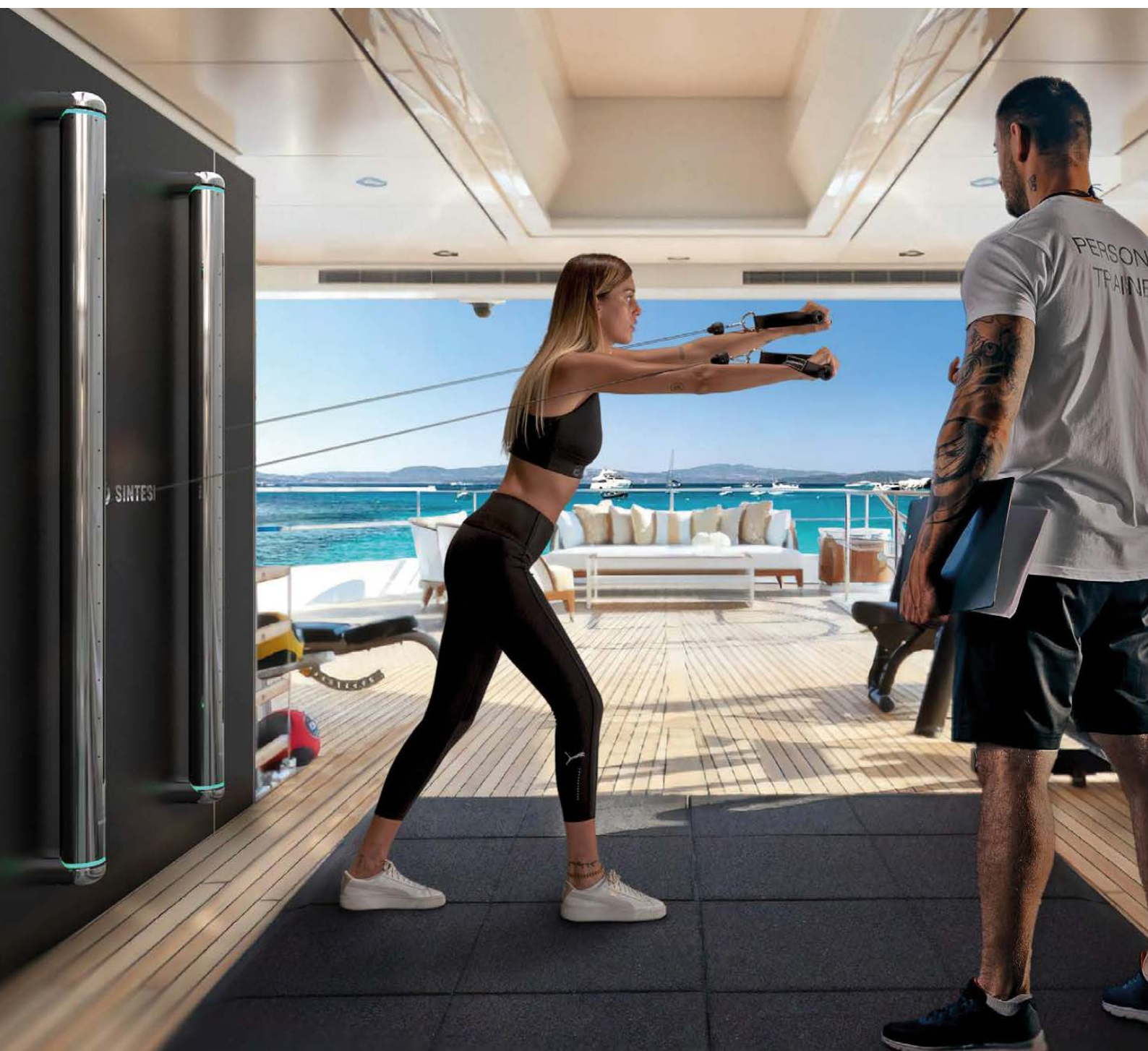
The size of the platform (205 X 95 cm) allows people in wheelchairs to work out in full freedom and control.



HOTEL, SPA, SHIPS & YACHTS

ELEGANT DESIGN FOR A LUXURY LOCATION

SINTESI is a real object of design that is suitable to be placed in sophisticated and refined contexts.



SINTESI COMPARISON CHART

THE MODEL THAT REFLECTS YOUR NEEDS

	PRO LITE	PRO EVO	PRO ELITE
Load levels	3-100 Kg	1-100 Kg	1-100 Kg
Dynamic Vectoring	Gravity Fixed Point Adjustable Gravity	Gravity Fixed Point Adjustable Gravity	Gravity Fixed Point Adjustable Gravity
Load profiles	Constant Eccentric Auxotonic Viscous - - - - -	Constant Eccentric Auxotonic Viscous Isometric Precision Magnetic - - -	Constant Eccentric Auxotonic Viscous Isometric Precision Magnetic Vibrant Isokinetic Random

THE ACCESSORIES



TRICEPS ROPE



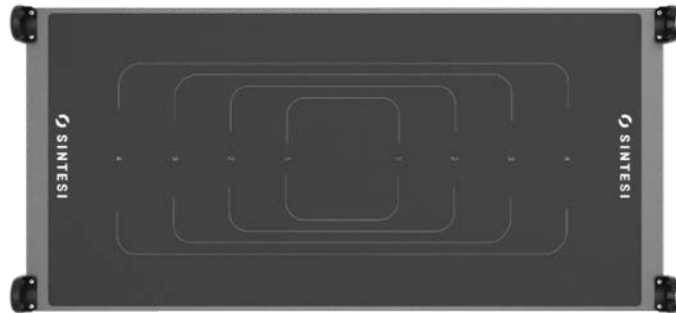
BAR



ANKLETS



HARNESS



FOOTBOARD

DIMENSIONS



FOLLOW US ON

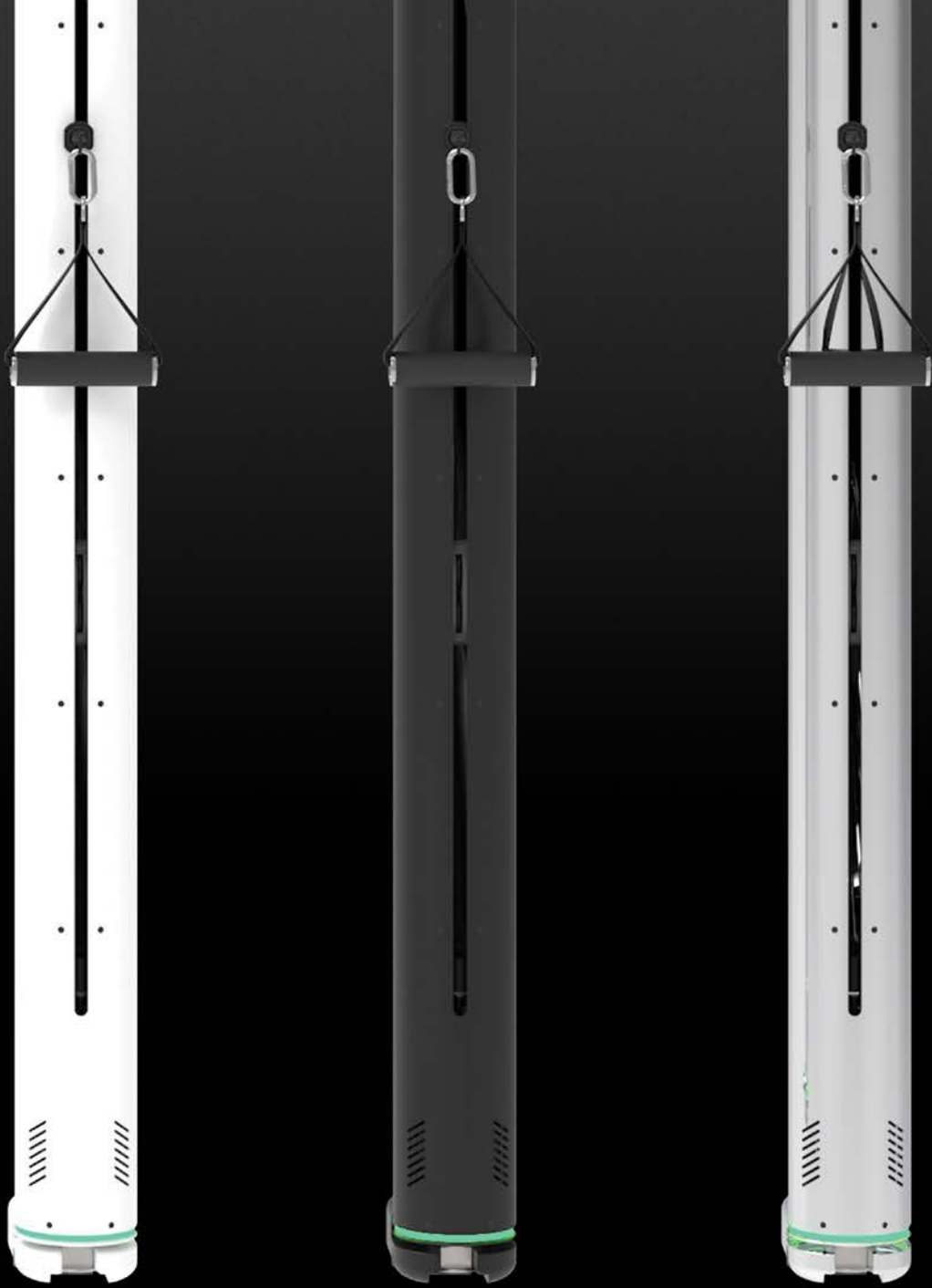


www.akuis.tech

Akuis S.r.l.

Via Aita Menotti, 2
33028 Tolmezzo (UD) - ITALY
Tel: +39 0433 850100

sales@akuis.tech



AKUIS